

# A Company Built on Innovation and Inspiration



# Contents

MD's Address	1
About Inventis	2
Our Clients	4
Strategy Vision	6
Quality and Awards	7
Sustainability	8
Board of Directors	10
Management Team	11
Furniture Division	12
Techology Division	20





# MD's Address



**Anthony Mankarios**  
Managing Director

## Inventis has been synonymous with Australian innovation in technology and ergonomic seating for four decades.

We are particularly proud of the robust Australian manufacturing base and business we have built over the last 4 years, in particular through a torrid Covid period with its challenges. We continue to focus on the advancement and development of innovative technology, integrated across certain facets of our manufacturing and supply chain.

The team at Inventis is committed to ensuring high levels of customer service, a pursuit of excellence, insuring returns on investment are maintained in the long term whilst investing in our people.

Our people are our biggest asset and we value and respect their diversity and contribution, aiming to develop and acknowledge our teams achievements and celebrate their success.

We aim to ensure our clients are our main priority and ensure interaction with them always remains positive throughout each business unit. Our strategy remains focused on building our overall capability to ensure we continue adding value to our clients.

We consider sustainability and social responsibility within our capabilities and forge meaningful partnerships nationally and internationally. Our expansion of Hazavoid™ in countries like the USA and the Philippines, along with supporting the growth of our commercial furniture office showrooms across Australia with our Indigenous partner, Winya Indigenous Furniture, reflects our ongoing commitment to growth.

I commend Inventis and our team to you.



# About Inventis Group

Inventis Limited is an Australian ASX-listed company involved in the design, manufacture, sales and marketing of products and services.

Our core aim is to build upon inspiration and innovation on all of our Australian-made products.

## Our Vision

Our Vision is to be a leader in the development of innovative products and inspired solutions for consistent and sustainable shareholder value.

## Objective

To grow revenue and returns to shareholders through our business innovation and technology whilst holding fast to our core values and social responsibilities.

## Strategy

To focus on satisfying customer needs and expanding its business. We seek new opportunities to enhance the group's value through innovation and technology, with a sustainable strategy for growth and increased earnings.

Inventis Group's strategy involves growth through the addition of synergy and capability, whilst growing organically by spreading our foot print Australia-wide.





## Furniture Division

The brands under our Furniture Division excel in crafting innovative, functional, and stylish office and commercial furniture solutions. Gregory emphasises durability and aesthetics, Workstations optimises workspace layouts, Bassett offers luxury options, and Bevisco integrates advanced technology. Together, they provide a comprehensive suite of furniture solutions tailored to modern workplace needs.



## Technology Division

Inventis Technology consists of five separate brands, each of which focuses on the design and delivery of improved electronic safety and security products. Our core competencies include the design and manufacture of customised electronic sensors, controllers, PCB boards, digital displays, wireless alert and communication systems, vehicle CAN bus systems, electronic design project management, rugged computer solutions and road/rail safety solutions. Our key markets include Defence, Education, Health Care, Mining, Security Integration and Emergency Responders including Police, Fire and Ambulance.





# Our Clients

## NATIONAL CLIENTS

Inventis' Australian clients include government, universities, financial institutions, and many of the nation's top 500 firms.



Commonwealth Bank





## INTERNATIONAL CLIENTS

In addition to our Australian clients, Inventis Technology has expanded its services to the USA and the Philippines. Our future growth plans include the UK, Pacific Islands, Indonesia, and India.

Current Footprint   
Planned Future Footprint 



### USA

Hazavoid™ USA

Montgomery, Texas



### Taiwan

Opentec Manufacturing  
Site OEM

Taipei City



### Philippines

Inventis Technology  
Philippines

Bonifacio Global City



### Australia

Inventis Furniture  
Manufacturing Site

Arndell Park, NSW



### Australia

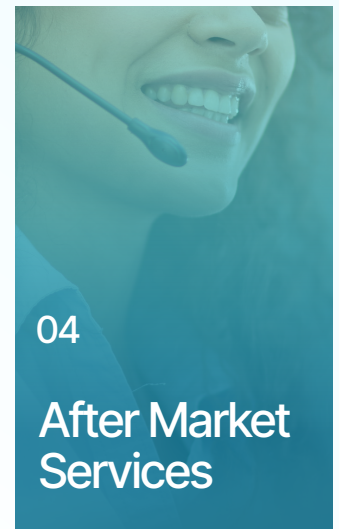
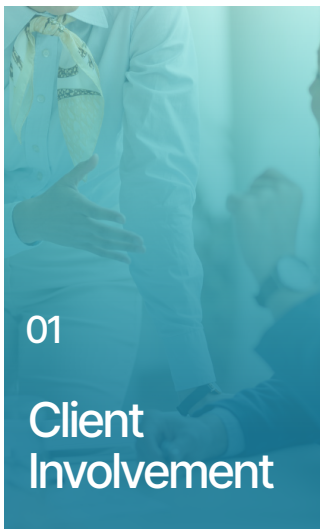
Inventis Technology  
Manufacturing Site

Matrville, NSW



# Strategy Vision

Inventis Group's strategy involves growth through the addition of synergy and capability, whilst growing organically by spreading our footprint Australia-wide. We do this through our fleet of approved dealers who help us optimise returns to shareholders to produce sustainable returns in investment.



Our Gregory Commercial Furniture Division continues to lead innovation, with technology and Australian design enabling the development of world-first products focused on the health and wellbeing of the user.

Our technology is leading the way in large and small organisations that care about their team members' health with products such as **G-Smart** (a mobile app and Smart Chair Technology), the **Project-W** office and Work-From-Home Chair, the **Gregory Acoustix Pod**, which has drawn significant interest and new orders into FY23, and the **Firstline** Chair for Australia's personnel in the Armed Forces, Police, and Security, which has seen encouraging initial feedback and support from Police Departments.

The Furniture Division creates technologically advanced products and focuses on sustainability and environmentally responsible solutions.

Winya also works with Indigenous communities to further economic inclusion initiatives and create better outcomes for community.

The Technology Division brings Australian trust and technological expertise to the international stage, with facilities in Matraville, Australia and Manila, Philippines.

It includes **Hazavoid™**, a wirelessly networked audio and visual alert system; **PNE Electronics**, an Australian pioneer in circuit design with a focus on sustainability; **Opentec**, Australia's original rugged computer specialist; **ECD**, the largest manufacturer of controllers for the elevator industry in Australia; and **Inventis International**, a joint venture between Inventis Technology and Varley Specialized Vehicles, offering standard and customised vehicles, such as police, fire, ambulance, container-based solutions, and mobile command vehicles, to the Philippine market.

Montgomery Texas USA reached agreements with key suppliers to Opentec for exclusive partner distribution rights, through Manila, Philippines in FY23. We can confirm a new Technology group office has now opened at the Bonifacio Global City (BGC) Manila in March 2023.



The Inventis Group is proud to maintain its position in the market as a quality manufacturer, certified to both ISO 9001:2015 and 14001:2015.

We have held our certification for many years and continue to develop and improve our systems and processes.

# Quality and Awards

We aim to provide the highest level of quality and consistency in our products and services to ensure our customers' expectations are satisfied in every instance.

All staff are well-trained in maintaining an effective and efficient Quality Management System.

AFRDI certified products

Winner of Australian Design Awards

ISO 9001:2015 certified

ISO 14001:2015 certified

USA FCC approved (Hazavoid™)

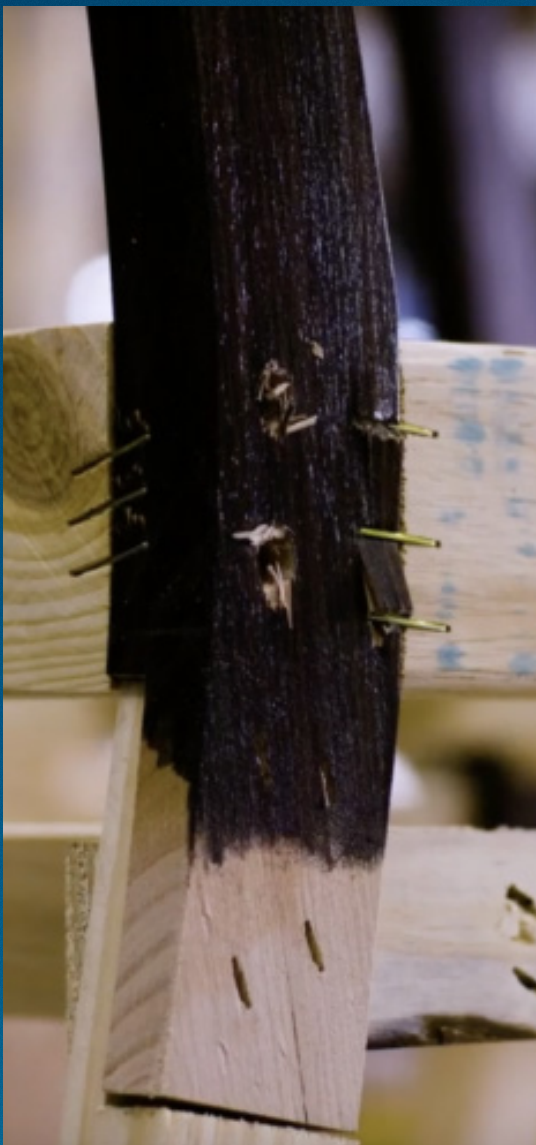
ACMA certified (Hazavoid™)

Australian govt. approved supplier

Comprehensive extensive product warranties



# Sustainability



Inventis group is focused on sustainability with recycling practices in place in both the furniture and technology divisions.

We are committed to sourcing timbers from renewable sources and ensuring recyclable plastics and metal components are used in the production wherever possible with Australian-made chairs, lounges, and tables.

Inventis Technology and Furniture have achieved ISO 14001:2015 following an extensive audit of our Environmental Management System by SAI Global. This is complementary to our existing sustainability certification to ISO 9001:2015.

The group is obtaining AFRDI Green Tick accreditation and has now received AFRDI 160 kg rating for the Gregory Chair ranges and continues with AFRDI 6 certification, maintaining the highest possible benchmark in safety and performance.

The group is also committed to the Modern Anti-Slavery Act 2018 and the Labour Compliance and is National Disability Insurance Scheme compliant. Many of the group's brands are signatories of and report on the United Nations Sustainable Development Goals.







# Board of Directors



## **Peter Bobbin**

Chairman of the Board

Peter has been a practising solicitor for more than 36 years. He is also a notary public and was a former accountant and university lecturer. He practices primarily in taxation strategy planning and commercial law and was recognised as Tax Advisor of the Year, 2015 (SME) by the Taxation Institute of Australia.

He brings his legal and tax knowledge and experience to the Board.



## **Michael Stafford**

Non-executive Director

Michael has been a corporate lawyer and partner at Eakin McCaffery and Cox Lawyers for over 20 years.

With extensive experience across all areas of commercial law, his expertise ranges from preparing a wide range of commercial agreements including mergers and acquisitions to advising on ASX listings and fundraising.



## **Anthony Mankarios**

Managing Director

Anthony has over 30 years of commercial experience leading organisations with an annual revenue approaching \$400 Million in both the capacity of an Executive Director and a Non-Executive Director in manufacturing, wholesale and retail sectors encompassing national and international markets.

Anthony Mankarios was appointed Group Managing Director in late 2019. Since, the Company expanded by adding 4 related Brands within the network in a relatively short timeframe, adding significant off-balance sheet value to the Group. Additionally with Investments in Winya Indigenous Furniture and a number of global Hazavoid™ start-ups in the USA and the Philippines.

Focused on developing solutions during significantly challenging times, Anthony's ethical focus and effective communication skills ensures all stakeholders are treated respectfully with the ability to meet shared objectives and values creating long term organisational value.



# Management Team



Michael Green  
Chief Operations Officer



Scott Downes  
National Sales and Marketing  
Manager – Furniture Division



Jeffry Stone  
General Manager –  
Technology Division



Chantelle Knight  
Company Secretary and  
Human Resource Manager



Ben Xu  
Interim Chief Financial Officer



Joshua Duong  
Quality Assurance Manager



Scott Keegan  
Operations Manager –  
Technology Division



Dion Scott  
Operations Manager –  
Furniture Division



# Furniture Division

## Strategies and Strengths



### Australian Made

Listed on the ASX since 1999, Proudly Australian-made and Australian-owned, the Group enjoys a privileged position to achieve much of the procurement protocols of government departments and large corporates.

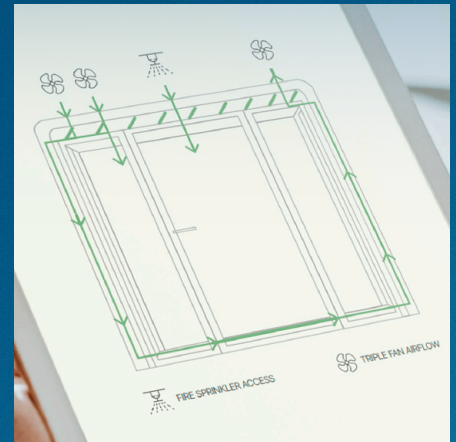
There is a growing, strong consumer sentiment to procure from Australian-made companies. With the various interruptions caused by Covid-19, delays experienced by many importers with logistics, and ongoing quality issues from many parts of the world, our furniture manufacturing in Australia has grown rapidly with clients eager to secure procurement in Australia.



### Sustainability Focus

Our Group focuses on continuous sustainability improvement, with award-winning leadership in product design, sourcing, and circular economy practices.

As one of the last original commercial chair manufacturers, Inventis Group's Gregory Commercial Furniture offers reliable warranties, unlike many importers who may not provide long-term support. With an in-house Technology Division, we repair and service sit-stand desks and ensure electronic compliance, a service unique in Australia. We also prioritise recyclability and renewable sourcing, aligning with corporate sustainability goals. This makes Gregory the best choice for buyers aiming to reduce landfill waste.

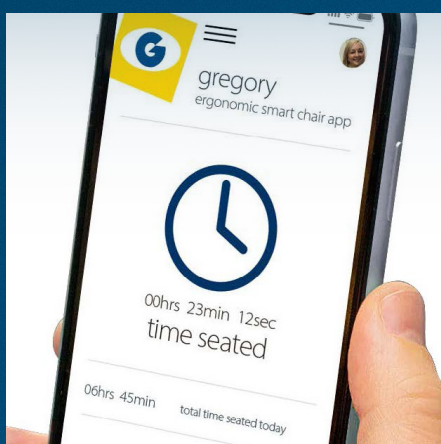


### Technology and R&D Leadership

We invest in new patents and designs, supported by in-house QA systems ensuring compliance with ISO 9001:2015 and ISO 14001:2015. Our R&D leadership results in low return and repair rates, an important consideration for procurement departments.

We leverage patented and registered design technologies, combined with strong electronics capabilities, giving us a unique competitive edge in Australia. In 2021, we developed the G-Smart™ Patented seat system, integrating mobile apps. Notable innovations include Project-W, designed for coccyx relief, particularly benefiting women, and the Acoustix Pod, a globally unique, wheelchair-accessible, fire-safe design for multi-story buildings.





## Work Health and Safety

Gregory is the only Australian-made product utilising modern ergonomic technology and design to reduce back pain and maximise comfort and workplace well-being for all genders. This approach helps employers reduce staff absenteeism and minimise WHS claims. With our patented G-Smart™ chairs, we go further by offering continuous care through posture monitoring and alerts for poor posture, ensuring better workplace health, safety, and efficiency.

By addressing these issues, we help employers maintain healthier work environments and lower absenteeism. Additionally, we have integrated advanced solutions for Work from Home setups, alongside the traditional office environment, ensuring comfort in any workspace.



## Cross Brand Efficiency

With each brand acquisition, we have delivered maximum vertical and horizontal integration capability that enhances the Groups' overall capability and efficiency, ensuring a positive client experience.

Whilst delivering accretive growth in earnings to our shareholders, this also assists reduced procurement stress with an enhanced capability to service all aspects of design, manufacturing, delivery and installation across the complete project.



## Social Responsibility

Furniture Division continues to lead in sustainability with recycling and reductions in emissions across all manufacturing by utilising better recycling opportunities and introducing a take-back policy to help recycle old chairs rather than have them placed in landfills.

Since partnering with Winya Indigenous Furniture, Gregory has integrated Indigenous engagement into its mission and processes. Through collaboration with local land councils, Gregory has enhanced its manufacturing process and prioritised creating apprenticeships and traineeships for Indigenous Australians. This strategy focuses on providing valuable skills training, long-term employment, and future opportunities for Indigenous communities.





## Gregory Commercial Furniture

[gregorychairs.com.au](http://gregorychairs.com.au)

Gregory Commercial Furniture is an ergonomic seating and commercial furniture Australian manufacturer. It has been operating since 1988; it is one of the original Australian commercial seating manufacturers remaining, with its roots firmly bedded in award-winning Australian design and technological improvement in ergonomic well-being. Its founder Peter Gregory, a Physiotherapist, first addressed the cause of occupational back pain in office workers.

Peter's knowledge of the anatomical reasons for chronic back pain and his precise observations of correct seating posture, led to the development of the original award-winning Dual Density Posture Support System. This award-winning design is at the very core of all Gregory chairs.

Gregory developed G-Smart™, a patent technology that uses an application suitable to download on iPhone or Android phones. This allows the Gregory Office chair to talk to your phone and send push notifications relating to your correct posture and seating times. It provides technological improvement to the office chair to assist WH&S professionals in helping manage workers' conditions and is the first choice in this sector by many discerning professionals. It has also developed Project-W and Firstline, the Police chair, to assist the armed services and the security industry seating arrangements with heavy gun belts and utility belts to correct their posture.







Gregory's Acoustix Pod is designed with a strong focus on accessibility, complying with the Disability Discrimination Act and fire regulations for multi-storey buildings. It is a pioneering wheelchair-accessible pod, featuring user-friendly handles, a compliant turning radius, and easy entry. It also prioritizes health and safety, with a fire-sprinkler accessible roof, making it the only acoustic pod for wheelchair users that meets strict fire safety standards. Additionally, the pod ensures superior air quality with a triple-fan airflow system and a built-in HEPA filter for optimal air circulation.

Sustainability and Australian production are the focus for Gregory; it continues to improve with the highest available AFRDI 160 kg rating and generous, genuine 10-year warranties available on our Australian-made products.

Inventis Group's unique cross-divisional circular economy leadership capability means that Gregory is the only Australian furniture company with a genuine technical warranty capability on electric sit-stand desks (other furniture companies can't repair this product, and it all goes to the landfill).

All of Gregory's seating is returnable and recyclable as part of the company's industry-leading Circular economy model.





## Bassett Furniture

[bassettfurniture.com.au](https://bassettfurniture.com.au)

Bassett Furniture's craftsmanship and unique designs have inspired designers and architects who appreciate sustainability and a high-quality Australian manufactured product.

This OEM commercial lounge, soft seating, and booth manufacturer supplies many resellers and some Aged Care hospitals directly and provides refurbishment services to rail seating in NSW and Queensland. Bassett frames are made in-house to strict specifications for commercial use from Plantation Solid timbers such as Victorian Ash, NZ Beech and Pine.

All patterning, cutting and sewing are controlled in-house. They operate under Quality Gate procedure. Bassett can design, prototype, test, and manufacture quality products in-house.

Bassett is currently developing and expanding its product offering and we plan to leverage both Inventis' technology and sustainability leadership, with lounges systems for business with charging and lighting ports and even booths with UV sterilisation and HEPA for Covid cleansing.

The use of the Inventis Group's capabilities is providing sustainable and low-cost recycled componentry for use in Bassett Furniture that goes back into Gregory branded sustainable lounges.





## Bevisco Commercial Interiors

[bevisco.com.au](http://bevisco.com.au)

Bevisco Commercial Interiors is well-known as a manufacturer of quality workstation systems and provider of complete office furniture solutions. Bevisco offers a depth of experience and expertise in the design, manufacture and installation of workstations, office furniture and storage solutions including a full range of ergonomic and conference seating. As a wholly Australian-owned and operated manufacturing company, they can ensure that the delivery cycle is managed in an environmentally sensitive and commercially sound way.

Bevisco's strong ties with our European partners allow them to bring the latest in design and innovation. This global experience and expertise also support our ability to fast-track product development. Bevisco has a rigorous quality assurance program that is maintained throughout the design, production and installation phases to ensure that the highest standards are maintained.

With a certified ISO 9001:2015 Quality Management System, ISO 14001:2015 EMS in place, Bevisco can always deliver environmentally sound value and quality. Applying workstation systems and data management has made Bevisco a highly efficient sales and marketing division with the same back-end product supply chain, systems and processes.







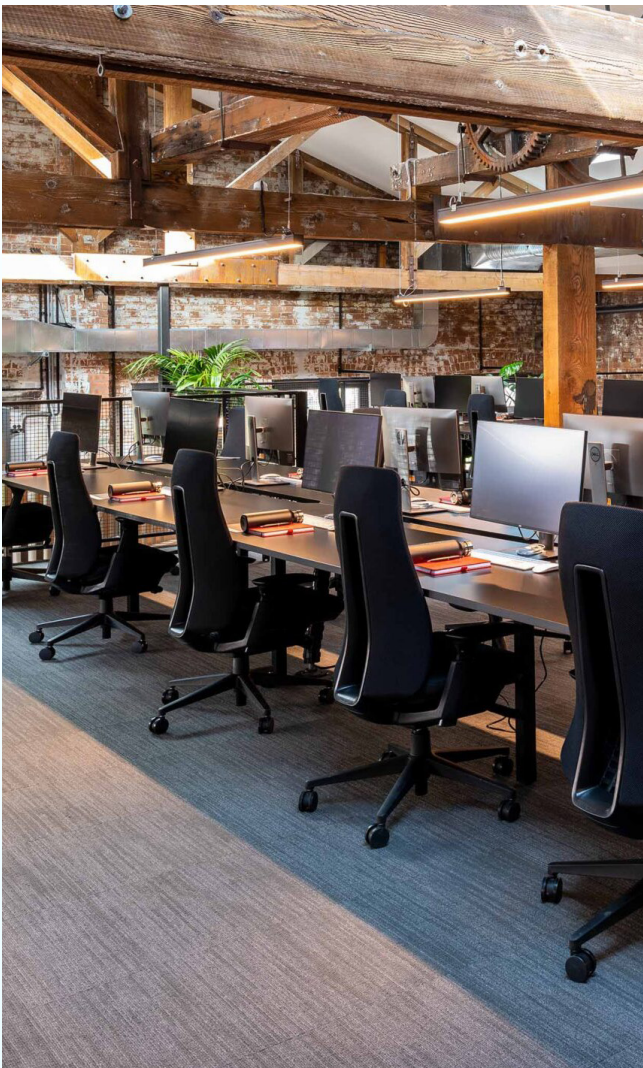
## Workstations [workstations.com.au](http://workstations.com.au)

Workstations.com.au is an efficient online and full-service office furniture company providing seamless service solutions for office furniture with the fit-out of workstations, desks, and chairs.

A complete range of all requirements is available online, and a trained specialist can assist clients from design firms and mid-sized fit-out firms. It has grown rapidly by utilising SEO and e-commerce initiatives.

Workstations sources and supplies and installs offices and healthcare furniture to an exceptional standard, ensuring quality and customer expectations are exceeded whilst assisting in creating indigenous opportunities. Workstations offers a comprehensive solution, far beyond simply selling furniture. They provide end-to-end services including project management, spatial design, sourcing, delivery, and installation.

Workstations ISO 9001:2015 Quality Assurance System is integrated into the entire operational control system. This gives seamless control and visibility into manufacturing, supply, and installation processes via PSM software system. PSM system also gives the customer full transparency into their order or fitout, so they can address any issues or delays before they become an issue.







Workstations has an Environmental Management System to ensure compliance with environmental requirements and to focus the business on the need for sustainable manufacture and procurement. Workstations is also committed to its training and developing of Indigenous Community's business skills and ensures assistance to the wider deployment of EMS standards across Indigenous SMEs.

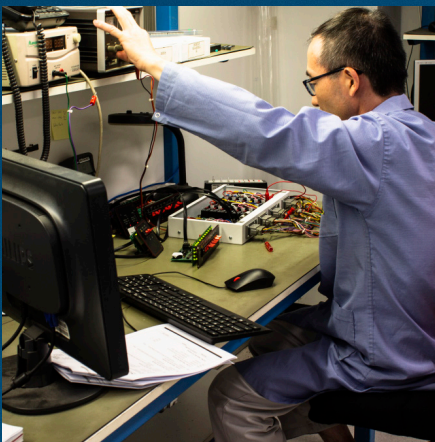
Inventis Group is increasingly benefiting from the development of internet marketing skills and leverage from SEO and strong data management from our Workstations operations.

Workstations's ultimate goal is to forge long-term relationships with clients, built on a foundation of trust, quality, and excellence. This is achieved by delivering successful projects that exceed expectations, providing exceptional customer service throughout the journey, and continually improving our processes to stay at the forefront of the industry.



# Technology Division

## Strategies and Strengths



### Australian Made

The level of trust for a technology product that is designed and manufactured locally is significantly higher than from other countries within the Asia Pacific region. Due to strict government regulations, *Made in Australia* ensures our customers receive the highest quality products with sovereign security measures like encryption protection.

Our commitment to sustainability, fair pay, adherence to the world's best practice guidelines, environmental standards, support of the domestic economy drives our passion to support Australians and Australian industries. Local Australian and overseas service and support coupled with a reliable supply chain resonates favourably with many government and local businesses.



### Patented Design and Leadership

Inventis Technology has a long tradition of local innovation. Our talented body of engineering and design staff have delivered numerous patented and unique products.

We secure a strong market leadership position by designing, developing, and owning our intellectual property. Patents including the automatic cut-off switch for the modern steam iron, G-Smart™ ergonomic seating apps, *Man Down* safety alert systems- Inventis Group's Hazavoid™ helps ensure our position of delivering unique solutions to numerous risk scenarios within today's workplace.



### Customisation

As the Original Equipment Manufacturers (OEM) for all our products, we are well-positioned to provide customised solutions to our client's needs.

Our engineers and production team are well-experienced in delivering unique results to various demands. As an example, our Hazavoid™ range has been customised at client requests to deliver safer school crossings, improved vehicle and rail warning systems as well as specialised weather alert systems for use in airports, marinas, mining sites and flood-prone areas on an international scale.

Higher levels of customisation ensure a higher grade of customer satisfaction in the long term.





## Partnerships and Referrals

Inventis has collaborated with various organizations to provide fast, relevant solutions in a rapidly changing market. Partnering with local and global companies, we deliver software solutions for emergency services, disaster management, and risk management, enhancing safety and saving lives.

Similar solutions involving the supply of Speciality Vehicles ranging from mobile command to firefighting solutions for international supply are developed to deliver significant sales growth in our target markets.

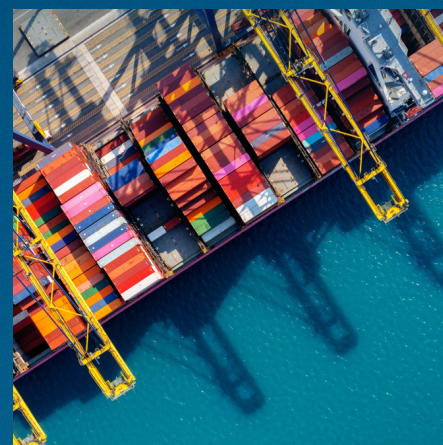
Inventis has received high praise from safety and risk management groups, such as the Philippines' NDRRMC, as well as from WH&S practitioners and government bodies in Australia.



## Quality Accreditation

Inventis Technology is fully certified to ISO 9001:2015 for Quality Assurance and ISO 14001:2015 for Environmental Assurance. We have achieved FCC approval for our Hazavoid™ products being sold into the growing US market and we have ACMA certification locally for the same.

Our Opentec range of rugged computers are designed for the harshest of environments. MIL-STD 810G and 461F deliver a level of ruggedness and EMI capability that meets or exceeds most NATO standards. Our products are designed and manufactured to meet the harshest global climate conditions. Many of our Emergency Service products which are used by Police, Fire and Ambulance Services have been in the field for over 20 years.



## Global Supply Capability

Global supply can be relied upon with our various brands capable of meeting various international standards. We welcome local supply opportunities in countries we operate in for components and talent resourcing.

Many of our ranges including Hazavoid™, ECD and other Inventis Technology products are sold internationally. Our international growth strategy is reflected in our recent entry into North American and the Philippine markets. These locations offer significant growth capabilities for our range of safety and security products. Our growth strategy will soon focus on solutions for the Pacific Islands, India, and Europe. We welcome any enquiry from interested partners in those markets.





## Hazavoid™

[hazavoid.com](http://hazavoid.com)

Formerly known as Emergency Alert Systems (EAS), Hazavoid™ is recognised as the world's most reliable wirelessly activated emergency alert system. It delivers loud, easily distinguished **Alert**, **Lockdown**, and **Evacuate** messages during emergencies when time is critical, ensuring effective communication in panic situations or threats to personal safety.

Designed and manufactured in Australia, Hazavoid™ holds both ACMA and FCC approval and features patented **Man-Down** capability in Australia and the USA.

Hazavoid™ specialises in providing fully wireless emergency warning solutions for both indoor and outdoor environments, utilising visual cues and audio signals to ensure comprehensive safety for all involved.

The system consists of a fixed control module, indoor and outdoor speakers, optional beacons or strobes, a handheld or wall-mounted wireless activator, and a power source, with the capability to recharge via solar or main power. Operating on a secure, encrypted 32-bit data transmission protocol, it functions within the 433 or 915 radio frequency networks, making it modular, scalable, and cost-effective.





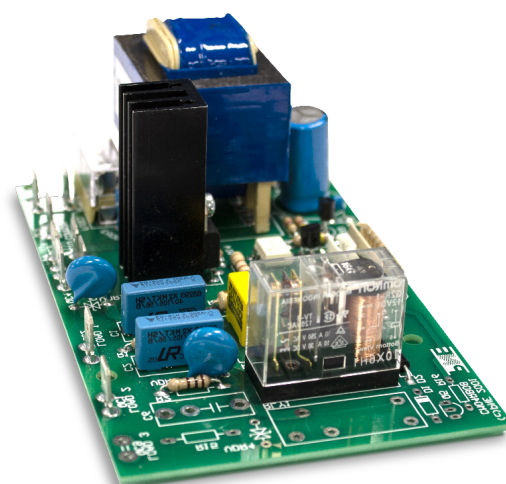
Key features of Hazavoid™ include customisable siren tones and voice-overs, which reduce confusion and improve reaction time. Its fully wireless activation allows for quick deployment in stressful situations, while strobe lights provide essential visual cues for varying scenarios. With battery backup and optional solar panels, Hazavoid™ ensures continuous protection. The system is economical, allowing users to start small and scale up as needed, with fully customizable message delivery options.

Ease of use is a priority, designed so that even those without training can operate it effectively with the push of a button. Hazavoid™ also emphasises customer service, providing support before, during, and after installation to adapt to specific needs.

Applications for Hazavoid™ span various sectors, including education, mining, energy, industrial sites, military bases, airports, and outdoor events. Notably, the system is implemented on every military base in Australia, and a portable version is also available.

With a proven track record of design breakthroughs that enhance safety, add value, and lower costs, Hazavoid™ has recently opened new offices in the USA and the Philippines to meet growing global demand.





## PNE Electronics

[pne.com.au](http://pne.com.au)

PNE Electronics began its journey in 1985 with the invention of the safety cut-out switch for domestic steam irons, a product now widely used in consumer appliances. From this initial breakthrough, PNE has grown into a leading Australian and regional designer and manufacturer of electronic control sub-systems, interfaces, and specialised electronics products. PNE's expertise covers creating control solutions for any electronic device, such as sub-assemblies for variable speed motors, analogue switch interfaces for appliances, or touchscreen controls for vending systems. They consistently innovate to enhance features, improve safety, and reduce manufacturing costs.

More than just an electronics design or contract manufacturing firm, PNE offers comprehensive turnkey solutions—from basic circuit design to full product development, manufacturing, and marketing. Their custom solutions are tailored to meet the needs of OEMs and end-users, providing better outcomes for a wide array of industries.

Today, PNE's innovations continue to introduce new features and commercial benefits, and they have become a self-sustaining engineering and development group. Their extensive product lineup includes embedded and wireless controls for safety switches, heaters, evaporative coolers, electric blankets, pool chlorinators, solar pool heaters, precision fluid metering systems, automatic money changers, electronic safes, steam sanitisers, wireless alert systems, and railway warning systems.





## Opentec

[opentec.com.au](http://opentec.com.au)

Opentec is Australia's original rugged computer specialist. Since 1986, Opentec has pioneered customise portable computer technologies in Australia and has been delivering market-leading customise computers and computer-based solutions ever since. Opentec was Australia's first ISO Certified designer and computer equipment manufacturer, covering commercial, industrial and defence rugged grade systems. Whether the application calls for semi-rugged, rugged, or ultra-rugged, Opentec Solutions has the right solution.

From super-rugged, super-reliable solutions for use on freight trains in the transport industry; to combat-ready rugged platforms that operate in extreme environments; to sub-zero Antarctic environments; to fully customised commercial rugged solutions for mobile workforces, Opentec delivers the genuinely rugged computers that organisations need to go about their business.

Opentec's key discriminators include the ability to customise solutions to meet client needs; Military Grade, ultra-rugged hardware for ground, air and sea applications; ability to supply client-specific products; full design flexibility; local service and support; global supply capability, COTS and MOTS capabilities; certified products that meet or exceeds global NATO standards (MIL-STD 810G, 461G and Tempest); Government and Military specialists; and free demonstration models for testing and evaluation.







## Electronics Circuit Designs (ECD)

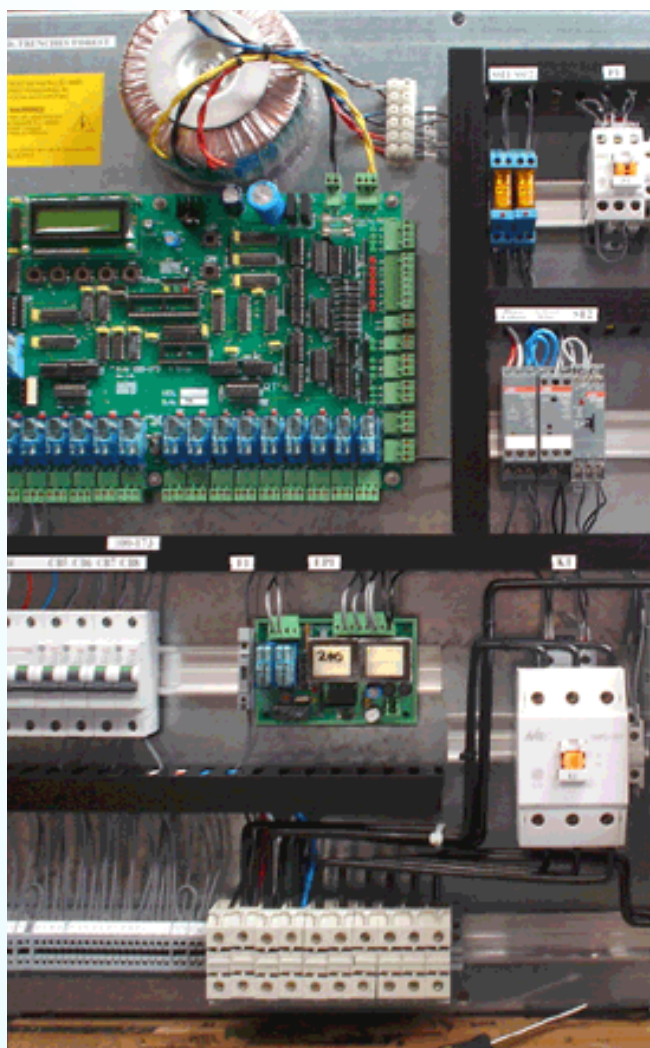
[ecd.com.au](http://ecd.com.au)

ECD is the largest manufacturer of elevator controllers in Australia. The company was founded in 1996 by two lift mechanics, Ross Taylor and Andrew Mayes, who had a vision of creating a more user-friendly and adaptable elevator control system. From its humble beginnings, ECD has grown into Australia's leading manufacturer, specialising in the design and production of high-quality, cost-effective electronic control and information systems for the elevator industry.

Their range of products includes shaft information systems, voice annunciator units, brake control boards, and dot matrix displays, all of which have earned a reputation for reliability and innovation.

ECD is committed to delivering the highest standard of service and products to all its customers. To uphold this standard, the company actively seeks feedback from clients to continually improve their current product line and promote new product ideas.

This customer-centric approach allows ECD to refine their offerings and ensure that their solutions stay aligned with industry needs, solidifying their position as a leader in the elevator control market.







## Inventis International

Inventis International is a joint venture between Inventis Technology and Varley Specialised Vehicles to provide standard and customised vehicles, including Police, Fire, Ambulance, Custom container-based solutions and Mobile Command Vehicles to the Philippine market.

Varley has over 138 years of experience in providing quality specialised vehicles to emergency service providers in Australia, the USA and South East Asia. Inventis Technology is proud to have the opportunity to work with Varley in an effort to enhance the safety and security of our international neighbours.

As part of the Inventis Technology Group, Inventis International has partnered with Varley Specialised vehicles to provide custom vehicle solutions to the Philippine Government. Current opportunities are valued at over \$100M AUD.

While in its early days, the sales and growth opportunities from the Inventis International range of products is massive.







Furniture Division

7 Holbeche Road  
Arndell Park, NSW 2148  
Australia

Technology Division

Unit 17, 133-137  
Beauchamp Road,  
Matraville, NSW 2036  
Australia

61 2 8808 0400

PO Box 40 Mt Druitt NSW 2770

[inventis.com.au](http://inventis.com.au)